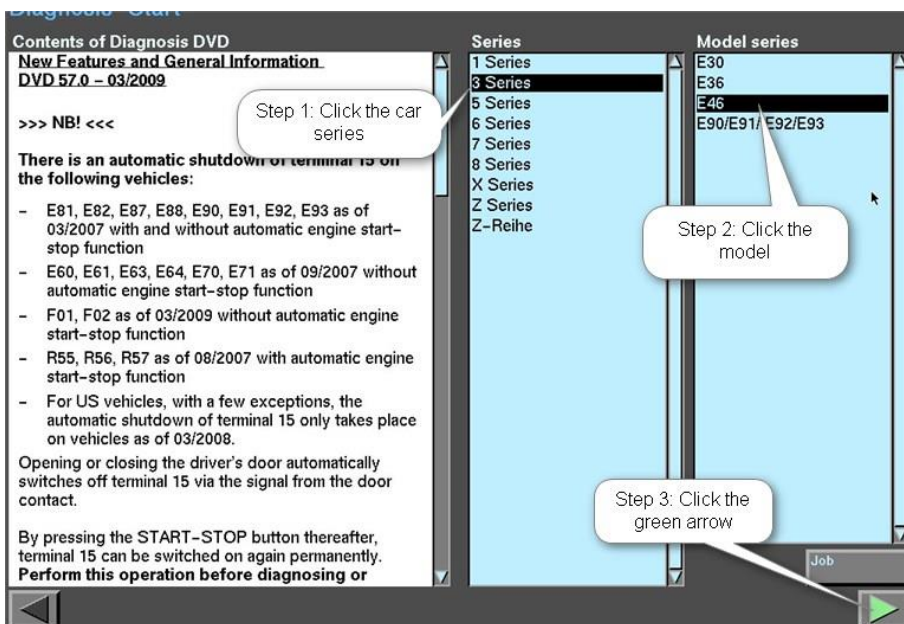
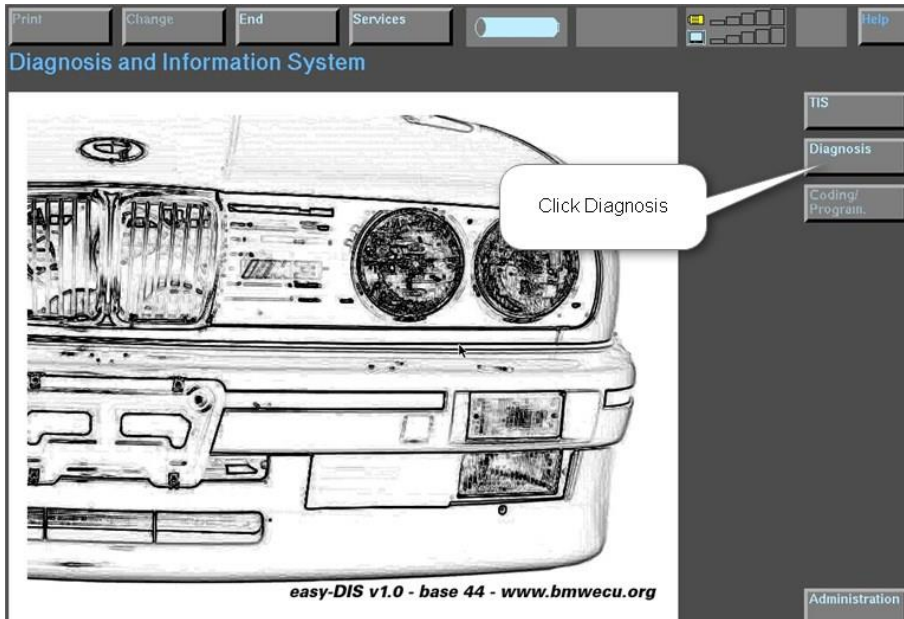
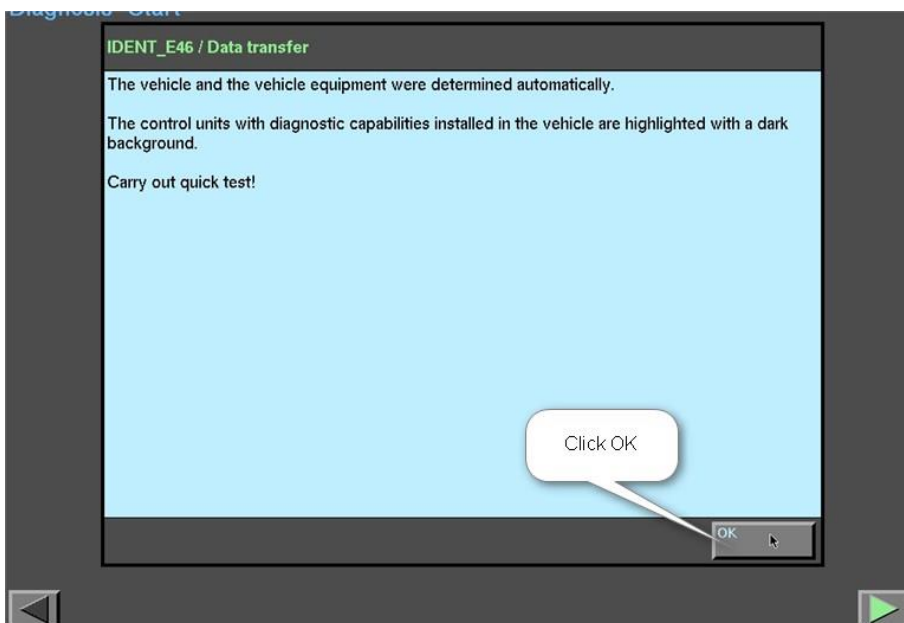
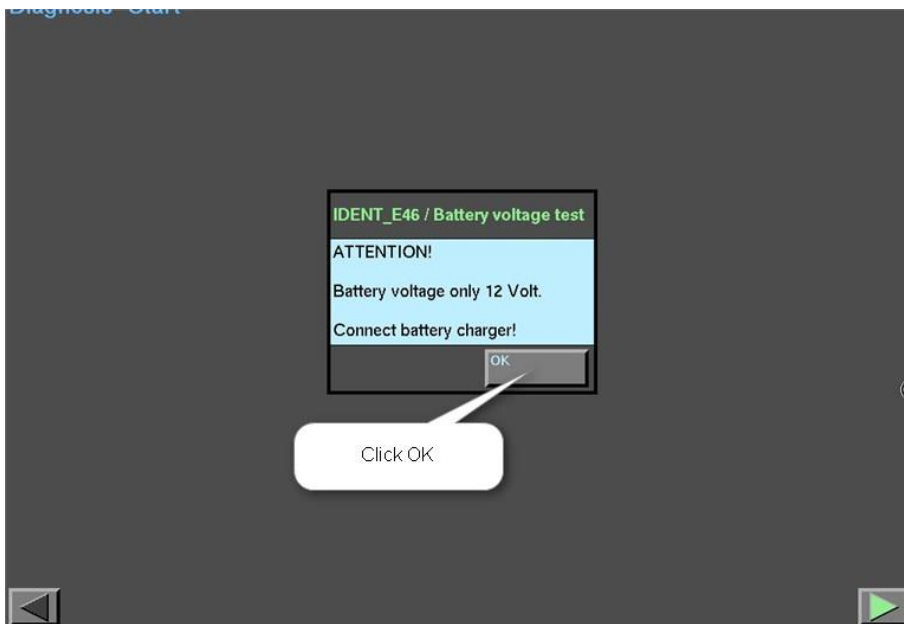
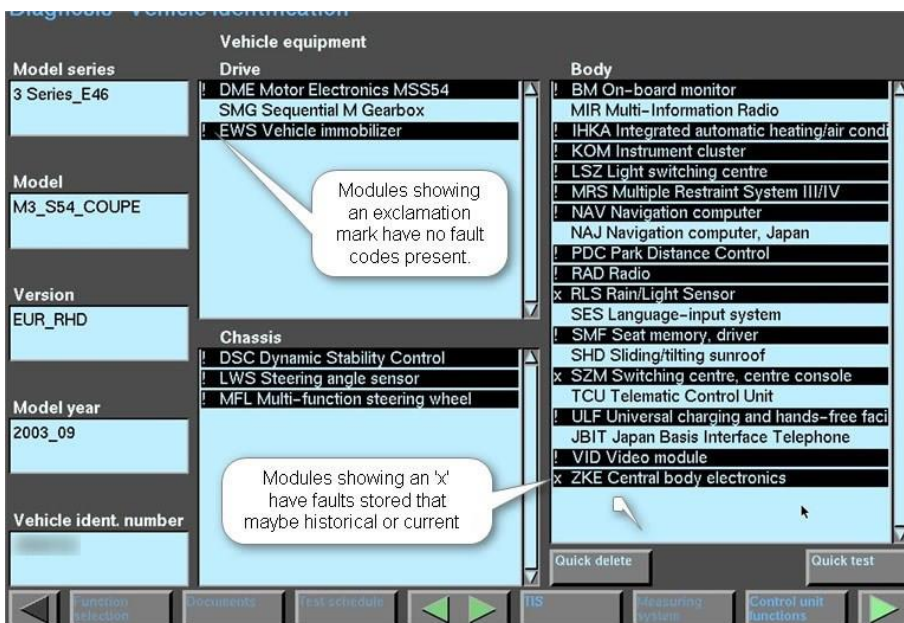
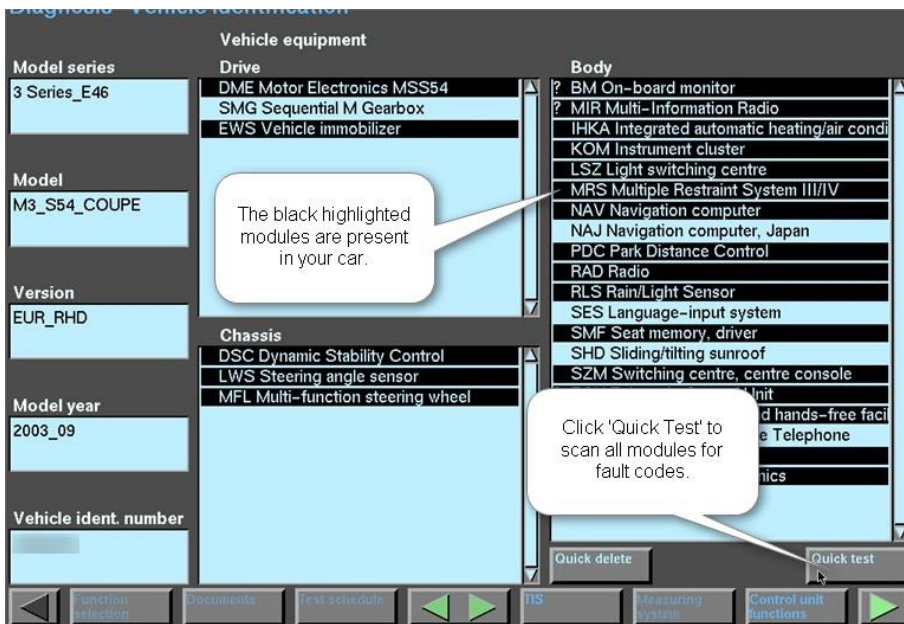
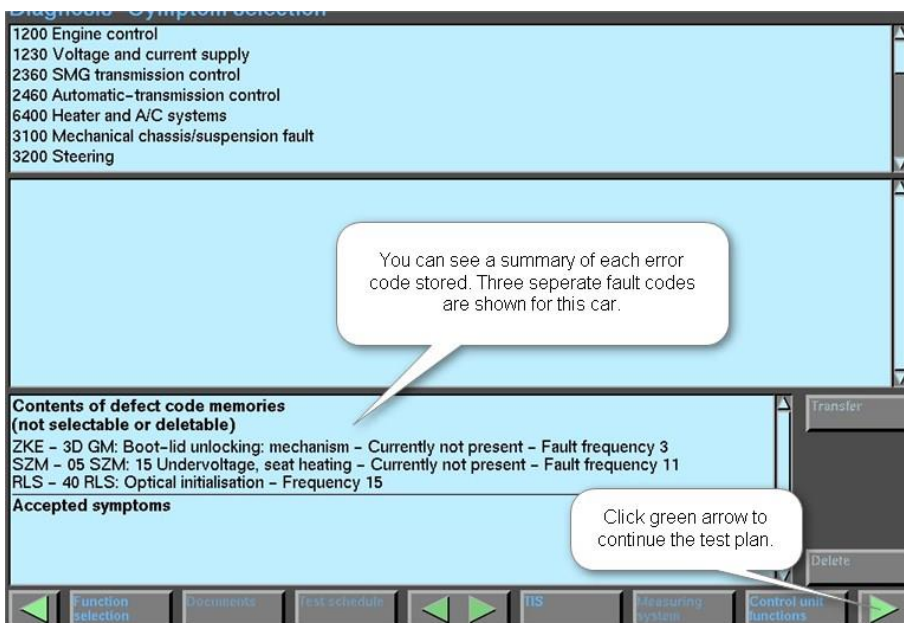
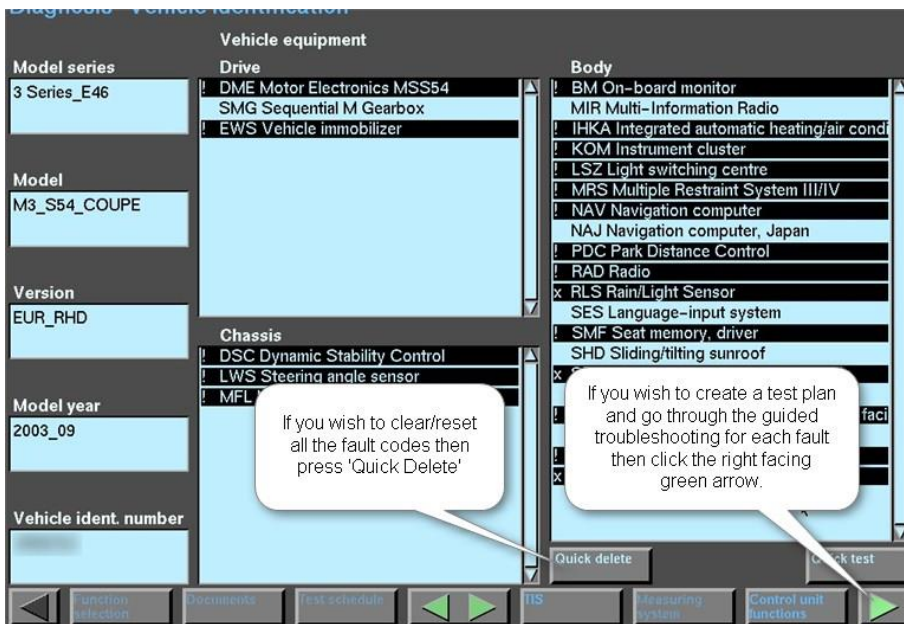


**BMTechnic How To Guide: Reading Clearing Fault Codes and Test Plans with DIS**









**DIS test schedule**

- ZKE - 3D GM: Boot-lid unlocking: mechanism - Currently not present - Fault frequency 3
  - Drive, rear lid B5126\_00006
- RLS - 40 RLS: Optical initialisation - Frequency 15
  - Rain/driving-lights sensor B6160\_RLS01
- SZM - 05 SZM: 15 Undervoltage, seat heating - Currently not present - Fault frequency 11
  - Seat heating, left B5203\_00005
  - Seat heating, right B5203\_00006

The boot unlocking mechanism will be the first fault we troubleshoot.

**Own test schedule**

Click the green arrow

Function selection | Documents | Test schedule | < > | DIS | Measuring system | Control unit functions >

**DIS test information**

**Boot lid release**

DIS provides information on how the system you are troubleshooting operates.

**Tailgate/rear hatch and rear window release**

The tailgate/rear-lid/rear-window release makes it possible to unlock the tailgate/rear lid (on saloon, coupe and touring) as well as the rear window (on touring) electrically.

The tailgate/rear lid is released via an electric drive with integrated return spring.

**Rear-lid release**

**Function**

The drive is activated directly by means of the general module V of the central body electronics.

On E46 saloons/sedans and coupés, it will only be possible to unlock the rear lid if the rear-lid lock is not in the workshop or hotel setting (lock cylinder)

**B5126\_00006**

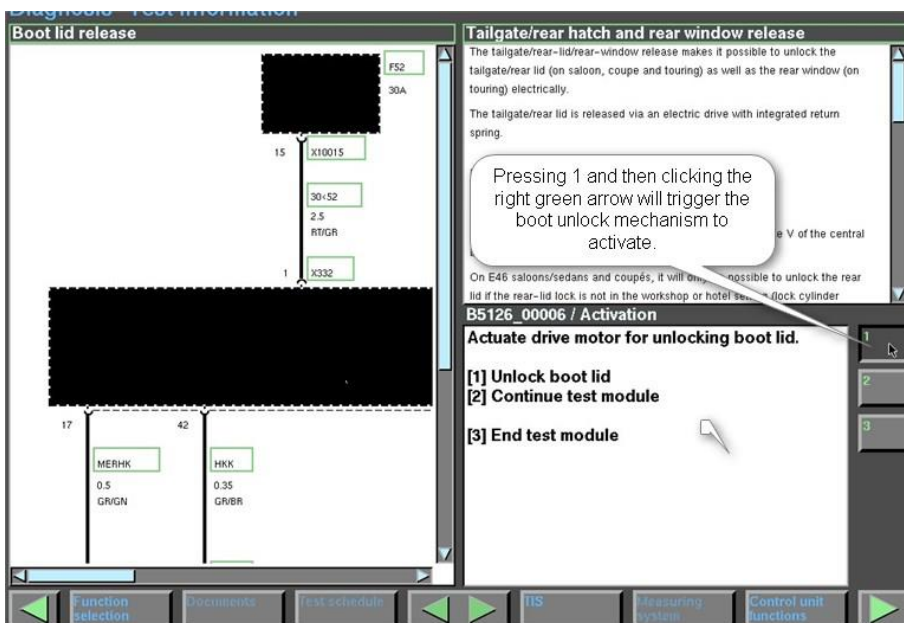
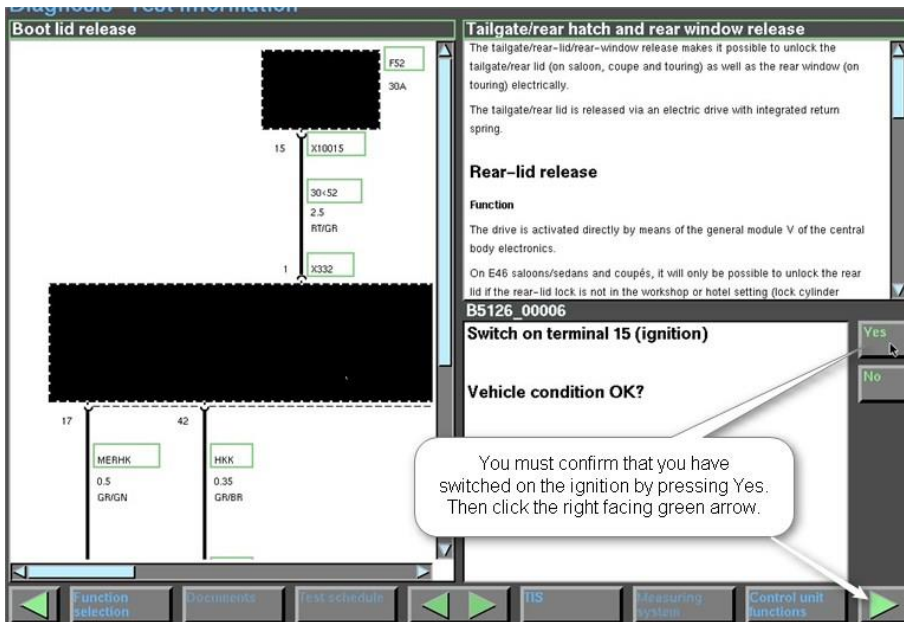
**Switch on terminal 15 (ignition)**

Follow the instruction given. In this case switch on the ignition.

Then press the green arrow to go to the next step.

Function selection | Documents | Test schedule | < > | DIS | Measuring system | Control unit functions >





I won't continue through the entire process as you'll obviously be troubleshooting different faults but this gives you a general idea of how you interact with DIS.

When you are finished with your troubleshooting. Close DIS using the following method:

